



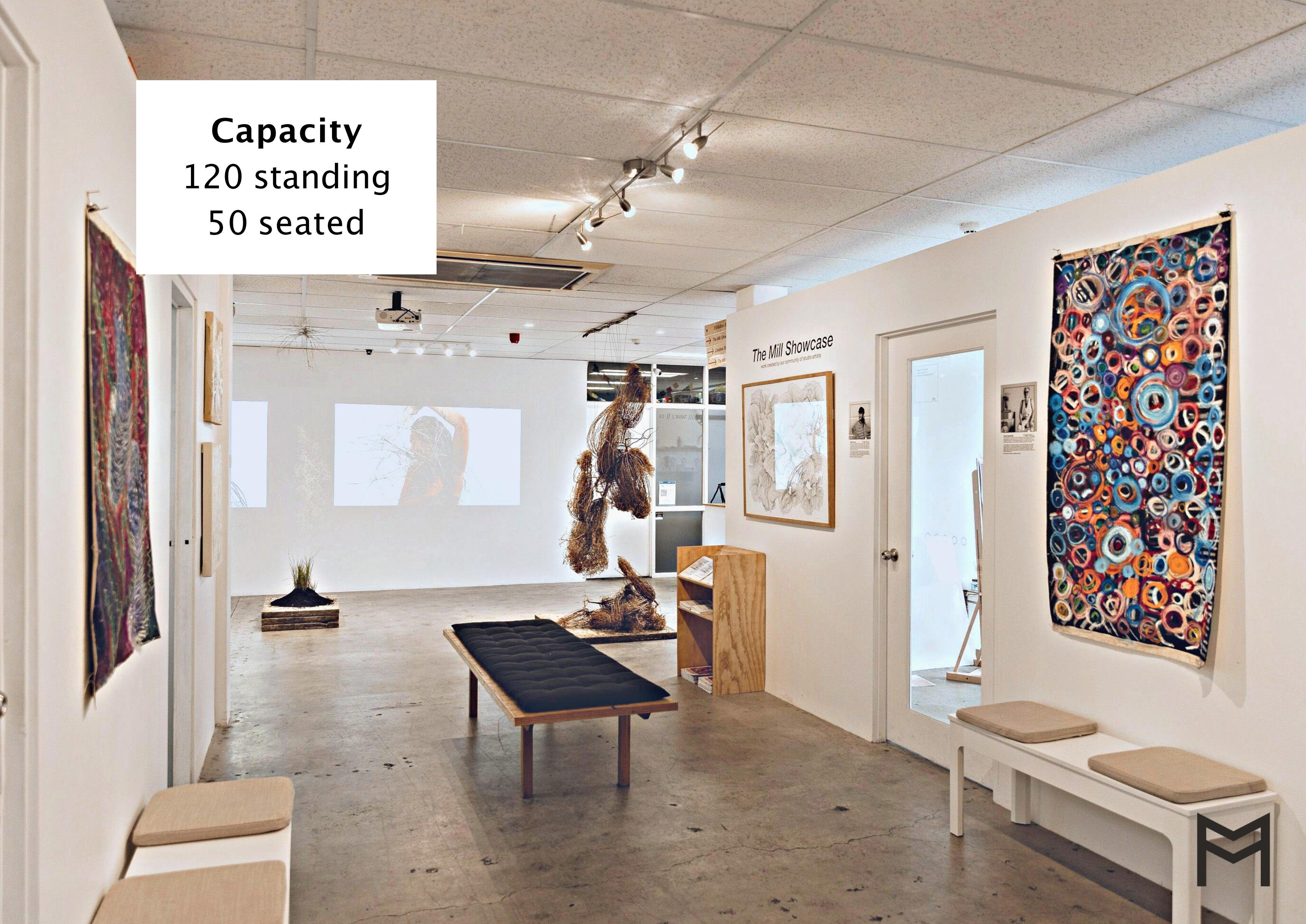
Venue Info

Exhibition Space

www.themilladelaide.com

THE MILL

Capacity
120 standing
50 seated





**Fully licensed with
bar, kitchen and
catering facilities**



Room:

White walls

(rendered/timber)

Polished cement floor

Audio Visual:

PA system

2x microphones

2x ceiling projectors

DI adapter

Track lighting

Available:

3x timber trestle tables

50x black chairs

Portable bar & fridge

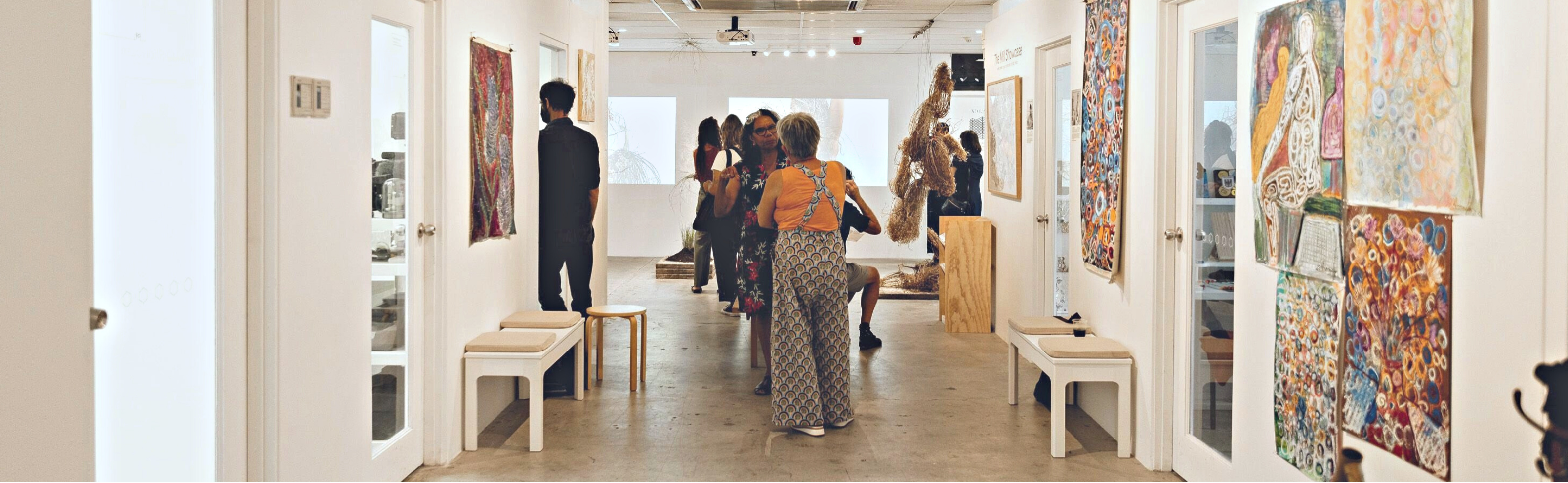
Exhibition accessories

Accessibility



**The Mill is a multidisciplinary arts
not-for-profit organisation**

**Supporting us creates opportunities
for South Australian artists**





THE SUM OF ALL ARTS

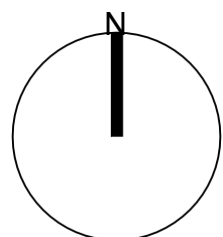
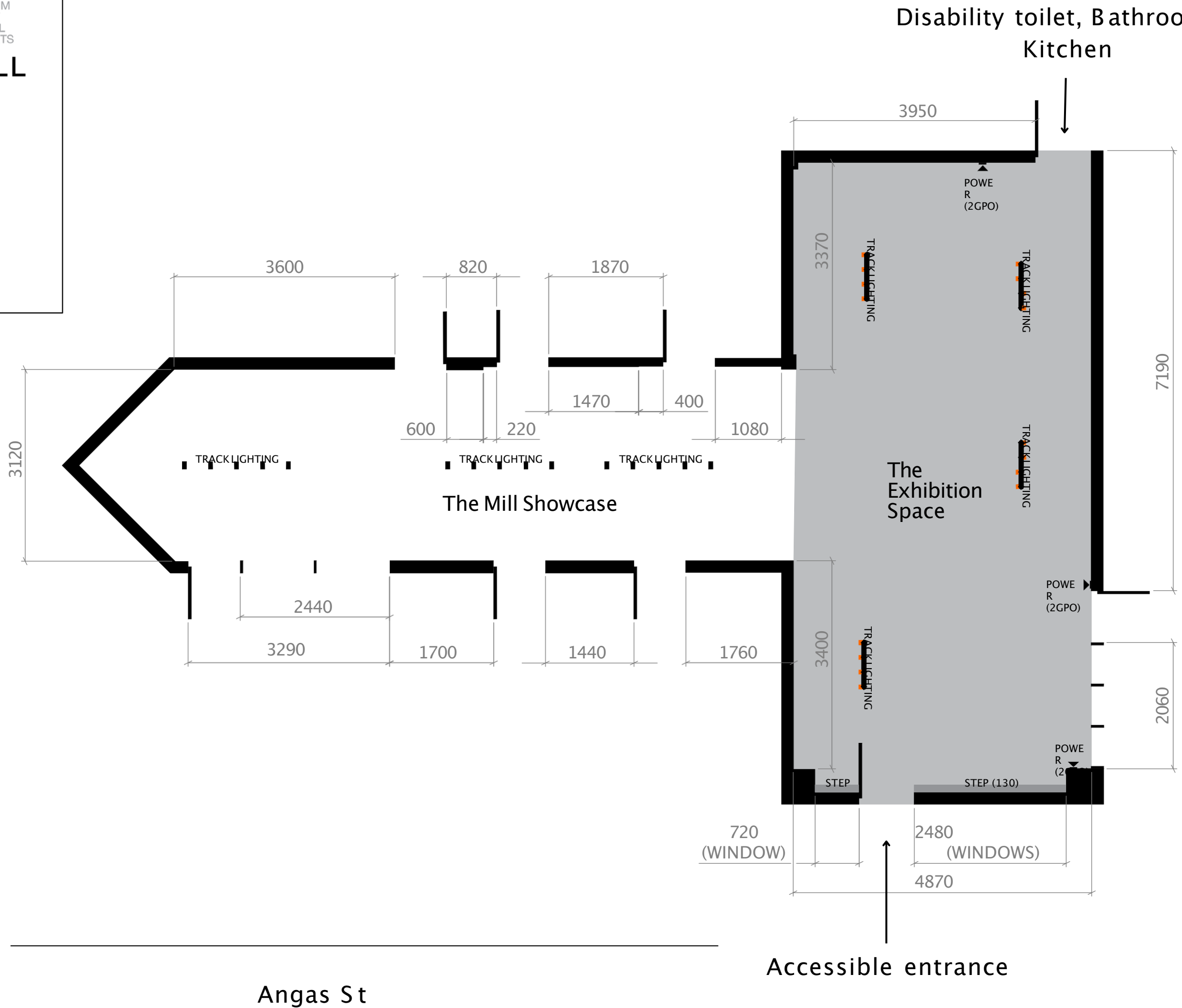
THE MILL

The Mill -galleries floorplan 2022

Ceiling Height ~ 2560 mm

Area ~ 86 m²

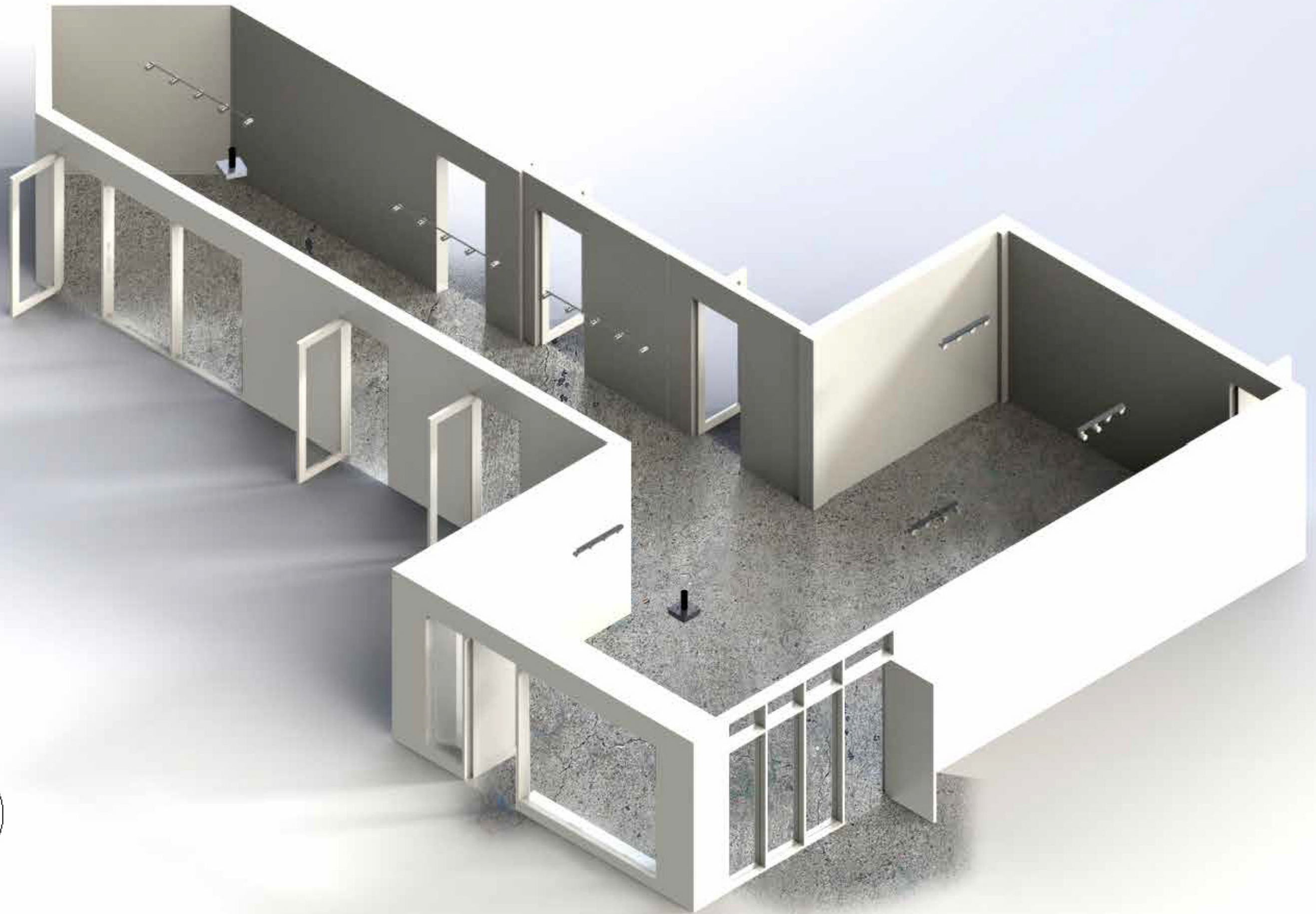
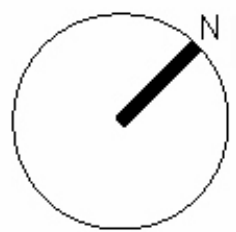
Drawing Size A3



Angas St

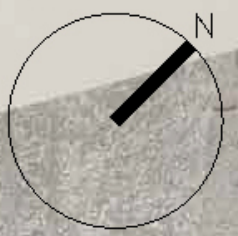
Accessible entrance





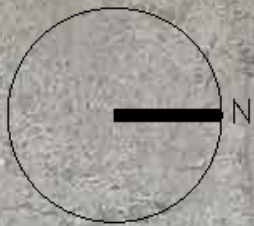
AUSTRALIAN MADE





AUSTRALIAN MADE





AUSTRALIAN MADE





THE MILL

CONTACT

EVENTS | venue@themilladelaide.com

EXHIBITIONS | visualarts@themilladelaide.com

154 Angas St, Adelaide 5000

www.themilladelaide.com